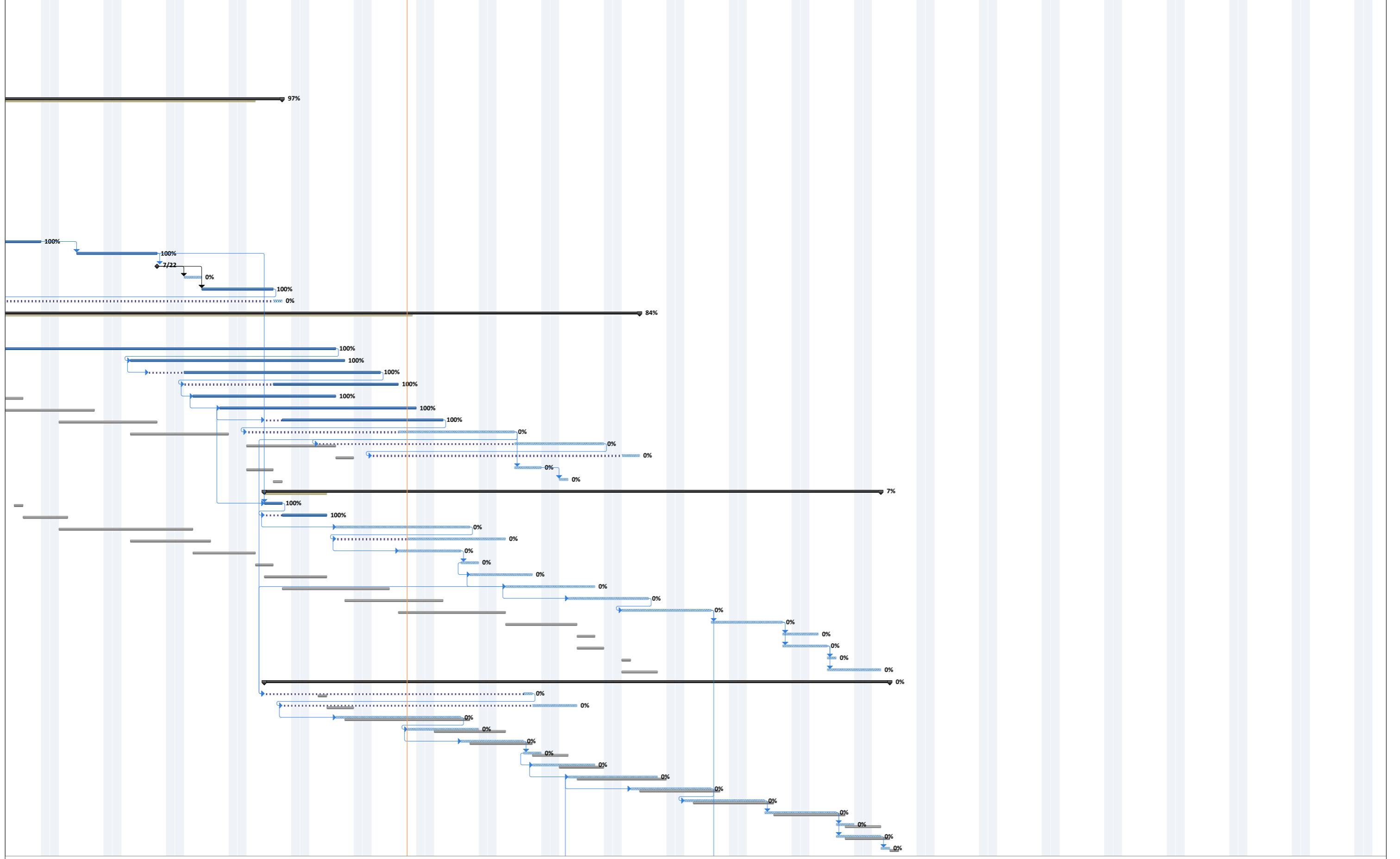


ID	Task Mode	Task Name	Duration	Baseline Start	Start	Actual Start	Baseline Finish	Finish	Actual Finish	Apr 4, '21	Apr 11, '21	Apr 18, '21	Apr 25, '21	May 2, '21	May 9, '21	May 16, '21	May 23, '21	May 30, '21	Jun 6, '21	Jun 13, '21	Jun 20, '21	Jun 27, '21	Jul 4, '21
1	✓	<b>Phase 1-Traffic Diversion for De</b>	<b>40 days</b>	<b>Thu 4/1/21</b>	<b>Mon 4/5/21</b>	<b>Mon 4/5/21</b>	<b>Wed 4/14/21</b>	<b>Fri 5/28/21</b>	<b>Fri 5/28/21</b>	100%													
2	✓	Traffic Control	1 day	Thu 4/1/21	Mon 4/5/21	Mon 4/5/21	Thu 4/1/21	Mon 4/5/21	Mon 4/5/21	100%													
3	✓	Erosion Control Items	23 days	Thu 4/1/21	Wed 4/28/21	Wed 4/28/21	Thu 4/1/21	Fri 5/28/21	Thu 4/1/21	100%													
4	✓	Grading	5 days	Fri 4/2/21	Mon 4/5/21	Mon 4/5/21	Thu 4/8/21	Fri 4/9/21	Fri 4/9/21	100%													
5	✓	Weather days	7 days	NA	Mon 4/12/21	Mon 4/12/21	NA	Tue 4/20/21	Tue 4/20/21	100%													
6	✓	Surfacing	2 days	Fri 4/9/21	Wed 4/21/21	Wed 4/21/21	Mon 4/12/21	Thu 4/22/21	Thu 4/22/21	100%													
7	✓	Temporary Pavement Markin	1 day	Tue 4/13/21	Fri 4/23/21	Fri 4/23/21	Tue 4/13/21	Fri 4/23/21	Fri 4/23/21	100%													
8	✓	Detour Signing	1 day	Tue 4/13/21	Fri 4/23/21	Fri 4/23/21	Wed 4/14/21	Sat 4/24/21	Sat 4/24/21	100%													
9	✓	<b>Phase 2-Sta 33+50 - 46+00</b>	<b>74 days</b>	<b>Tue 4/13/21</b>	<b>Sat 4/24/21</b>	<b>Sat 4/24/21</b>	<b>Fri 7/2/21</b>	<b>Thu 8/5/21</b>	<b>NA</b>	100%													
10	✓	Traffic Control	0 days	Tue 4/13/21	Sat 4/24/21	Sat 4/24/21	Tue 4/13/21	Sat 4/24/21	Sat 4/24/21	100%													
11	✓	Remove Pavement	4 days	Tue 4/13/21	Mon 4/26/21	Mon 4/26/21	Thu 4/15/21	Fri 4/30/21	Fri 4/30/21	100%													
12	✓	Box Culvert	5 days	Wed 4/14/21	Mon 5/17/21	Mon 5/17/21	Tue 4/27/21	Fri 5/21/21	Fri 5/21/21	100%													
13	✓	Sanitary Sewer Mainline	5 days	NA	Thu 5/20/21	Thu 5/20/21	NA	Wed 5/26/21	Wed 5/26/21	100%													
14	✓	Sanitary sewer services	3 days	NA	Mon 5/17/21	Mon 5/17/21	NA	Wed 5/19/21	Wed 5/19/21	100%													
15	✓	Storm Sewer & Water	24 days	Fri 4/23/21	Mon 5/3/21	Mon 5/3/21	Thu 5/13/21	Tue 6/8/21	Tue 6/8/21	100%													
16	✓	Grading	14 days	Tue 5/4/21	Thu 5/20/21	Thu 5/20/21	Thu 5/13/21	Tue 6/8/21	Tue 6/8/21	100%													
17	✓	Base Course	4 days	Tue 5/11/21	Tue 6/8/21	Tue 6/8/21	Wed 5/19/21	Fri 6/11/21	Fri 6/11/21	100%													
18	✓	Paving Hubs	0 days	Thu 5/20/21	Sat 6/12/21	Sat 6/12/21	Fri 5/21/21	Sat 6/12/21	Sat 6/12/21	100%													
19	✓	Trimming	8 days	Fri 5/21/21	Tue 6/15/21	Thu 5/27/21	Thu 5/27/21	Thu 6/24/21	Thu 6/24/21	100%													
20	✓	PCC Paving	9 days	Tue 5/25/21	Thu 6/17/21	Thu 6/17/21	Fri 6/4/21	Tue 6/29/21	Tue 6/29/21	100%													
21	✓	Curb & Gutter	10 days	Tue 6/1/21	Mon 6/28/21	Mon 6/28/21	Thu 6/10/21	Fri 7/9/21	Fri 7/9/21	100%													
22	✓	Intersections & Driveways	7 days	Tue 6/8/21	Wed 7/14/21	Wed 7/14/21	Wed 6/16/21	Thu 7/22/21	Thu 7/22/21	100%													
23	✓	Sidewalk	0 days	Thu 6/17/21	Fri 7/9/21	Mon 6/28/21	Thu 7/22/21	Thu 7/22/21	Thu 7/22/21	100%													
24	✓	Lighting	2 days	Tue 6/29/21	Mon 7/26/21	Mon 7/26/21	Wed 6/30/21	Tue 7/27/21	NA	100%													
25	✓	Topsoil	6 days	Tue 6/29/21	Wed 7/28/21	Wed 7/28/21	Thu 7/1/21	Wed 8/4/21	Wed 8/4/21	100%													
26	✓	Erosion Control Items	1 day	Fri 7/2/21	Mon 7/5/21	Mon 7/5/21	Fri 7/2/21	Thu 8/5/21	NA	100%													
27	✓	<b>Phase 3-Sta 46+00 - 61+00</b>	<b>67 days</b>	<b>Thu 5/27/21</b>	<b>Mon 6/14/21</b>	<b>Mon 6/14/21</b>	<b>Fri 8/13/21</b>	<b>Tue 9/14/21</b>	<b>NA</b>	100%													
28	✓	Traffic Control	3 days	Thu 5/27/21	Mon 6/14/21	Mon 6/14/21	Thu 5/27/21	Wed 6/16/21	Wed 6/16/21	100%													
29	✓	Remove Pavement	1 day	Fri 5/28/21	Tue 6/15/21	Tue 6/15/21	Thu 6/3/21	Thu 6/17/21	Thu 6/17/21	100%													
30	✓	Storm Sewer & Water	30 days	Tue 6/1/21	Thu 7/1/21	Thu 7/1/21	Mon 6/21/21	Wed 8/11/21	Wed 8/11/21	100%													
31	✓	Grading	18 days	Mon 6/14/21	Tue 7/20/21	Thu 7/20/21	Thu 6/24/21	Thu 8/12/21	Thu 8/12/21	100%													
32	✓	Base Course	16 days	Fri 6/18/21	Thu 7/22/21	Thu 7/22/21	Tue 6/29/21	Mon 8/16/21	Mon 8/16/21	100%													
33	✓	Paving Hubs	10 days	Wed 6/30/21	Mon 7/26/21	Mon 7/26/21	Thu 7/1/21	Wed 8/18/21	Wed 8/18/21	100%													
34	✓	Trimming	12 days	Thu 7/1/21	Tue 7/27/21	Tue 7/27/21	Wed 7/7/21	Wed 8/11/21	Wed 8/11/21	100%													
35	✓	PCC Paving	16 days	Mon 7/5/21	Fri 7/30/21	Thu 7/15/21	Fri 8/20/21	Fri 8/20/21	Fri 8/20/21	100%													
36	✓	Curb & Gutter	12 days	Mon 7/12/21	Wed 8/4/21	Wed 8/4/21	Thu 7/22/21	Mon 8/23/21	Mon 8/23/21	100%													
37	✓	Intersections & Driveways	9 days	Tue 7/20/21	Mon 8/2/21	Mon 8/2/21	Fri 7/30/21	Tue 8/31/21	NA	100%													
38	✓	Sidewalk	8 days	Mon 8/2/21	Tue 8/10/21	Tue 8/10/21	Wed 8/11/21	Fri 9/10/21	NA	100%													
39	✓	Lighting	2 days	Thu 8/12/21	Mon 8/16/21	Mon 8/16/21	Fri 8/13/21	Tue 9/14/21	NA	100%													
40	✓	Topsoil	3 days	Mon 8/2/21	Wed 9/1/21	NA	Wed 8/4/21	Fri 9/3/21	NA	100%													
41	✓	Erosion Control Items	1 day	Thu 8/5/21	Mon 9/6/21	NA	Thu 8/5/21	Mon 9/6/21	NA	100%													
42	✓	<b>Phase 4-Sta 61+00 - 72+00</b>	<b>49 days</b>	<b>Wed 7/7/21</b>	<b>Wed 8/4/21</b>	<b>Wed 8/4/21</b>	<b>Thu 9/16/21</b>	<b>Mon 10/11/21</b>	<b>NA</b>	100%													
43	✓	Traffic Control	2 days	Wed 7/7/21	Wed 8/4/21	Wed 8/4/21	Wed 7/7/21	Thu 8/5/21	Thu 8/5/21	100%													
44	✓	Remove Pavement	3 days	Thu 7/8/21	Wed 8/4/21	Wed 8/4/21	Mon 7/12/21	Tue 8/10/21	Tue 8/10/21	100%													
45	✓	Storm Sewer & Water	11 days	Mon 7/12/21	Thu 8/12/21	Thu 8/12/21	Mon 7/26/21	Thu 8/26/21	NA	100%													
46	✓	Grading	7 days	Tue 7/20/21	Thu 8/12/21	Thu 8/12/21	Wed 7/28/21	Mon 8/30/21	NA	100%													
47	✓	Base Course	5 days	Tue 7/27/21	Thu 8/19/21	NA	Mon 8/2/21	Wed 8/25/21	NA	100%													
48	✓	Paving Hubs	2 days	Tue 8/3/21	Thu 8/26/21	NA	Wed 8/4/21	Fri 8/27/21	NA	100%													
49	✓	Trimming	5 days	Wed 8/4/21	Fri 8/27/21	NA	Tue 8/10/21	Thu 9/2/21	NA	100%													
50	✓	PCC Paving	8 days	Fri 8/6/21	Tue 8/31/21	NA	Tue 8/17/21	Thu 9/9/21	NA	100%													
51	✓	Curb & Gutter	7 days	Fri 8/13/21	Tue 9/7/21	NA	Mon 8/23/21	Wed 9/15/21	NA	100%													
52	✓	Intersections & Driveways	8 days	Thu 8/19/21	Mon 9/13/21	NA	Mon 8/30/21	Wed 9/22/21	NA	100%													
53	✓	Sidewalk	6 days	Tue 8/31/21	Thu 9/23/21	NA	Tue 9/7/21	Thu 9/30/21	NA	100%													
54	✓	Lighting	2 days	Wed 9/8/21	Fri 10/1/21	NA	Thu 9/9/21	Mon 10/4/21	NA	100%													
55	✓	Topsoil	3 days	Wed 9/8/21	Fri 10/1/21	NA	Fri 9/10/21	Tue 10/5/21	NA	100%													
56	✓	Erosion Control Items	1 day	Mon 9/13/21	Wed 10/6/21	NA	Mon 9/13/21	Wed 10/6/21	NA	100%													
57	✓	Permanent Pavement Markin	4 days	Mon 9/13/21	Wed 10/6/21	NA	Thu 9/16/21	Mon 10/11/21	NA	100%													
58	✓	<b>Phase 5-Sta 72+00 - 81+00</b>	<b>50 days</b>	<b>Tue 8/10/21</b>	<b>Wed 8/4/21</b>	<b>Wed 8/4/21</b>	<b>Wed 10/13/21</b>	<b>Tue 10/12/21</b>	<b>NA</b>	100%													
59	✓	Traffic Control	1 day	Tue 8/10/21	Wed 8/4/21	Wed 8/4/21	Tue 8/10/21	Thu 9/2/21	NA	100%													
60	✓	Remove Pavement	3 days	Wed 8/11/21	Fri 8/6/21	Fri 8/6/21	Fri 8/13/21	Tue 9/7/21	NA	100%													
61	✓	Storm Sewer & Water	10 days	Fri 8/13/21	Thu 8/12/21	Thu 8/12/21	Thu 8/26/21	Wed 8/25/21	NA	100%													
62	✓	Grading	6 days	Mon 8/23/21	Fri 8/20/21	NA	Mon 8/30/21	Fri 8/27/21	NA	100%													
63	✓	Base Course	5 days	Fri 8/27/21	Thu 8/26/21	NA	Thu 9/2/21	Wed 9/1/21	NA	100%													
64	✓	Paving Hubs	2 days	Fri 9/3/21	Thu 9/2/21	NA	Mon 9/6/21	Fri 9/3/21	NA	100%													
65	✓	Trimming	5 days	Mon 9/6/21	Fri 9/3/21	NA	Fri 9/10/21	Thu 9/9/21	NA	100%													
66	✓	PCC Paving	8 days	Wed 9/8/21	Tue 9/7/21	NA	Fri 9/17/21	Thu 9/16/21	NA	100%													
67	✓	Curb & Gutter	7 days	Wed 9/15/21	Tue 9/14/21	NA	Thu 9/23/21	Wed 9/22/21	NA	100%													
68	✓	Intersections & Driveways	7 days	Tue 9/21/21	Mon 9/20/21	NA	Wed 9/29/21	Tue 9/28/21	NA	100%													
69	✓	Sidewalk	6 days	Thu 9/30/21	Wed 9/29/21	NA	Thu 10/7/21	Wed 10/6/21	NA	100%													
70	✓	Lighting	2 days	Fri 10/8/21	Thu 10/7/21	NA	Mon 10/11/21	Fri 10/8/21	NA	100%													
71	✓	Topsoil	3 days	Fri 10/8/21	Thu 10/7/21	NA	Tue 10/12/21	Mon 10/11/21	NA	100%													
72	✓	Erosion Control Items	1 day	Wed 10/13/21	Thu 10/12/21	NA	Wed 10/13/21	Tue 10/12/21	NA	100%													

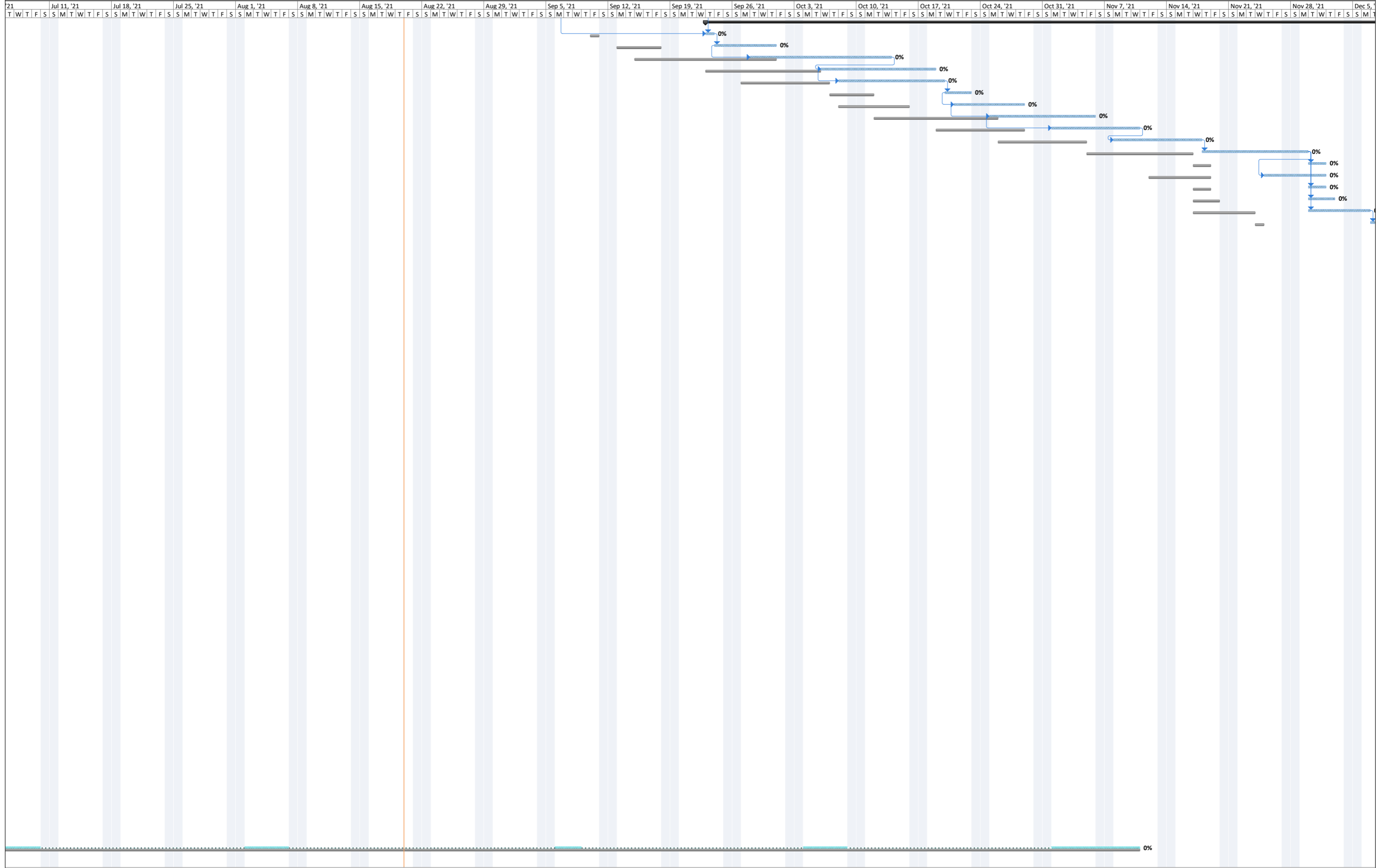
Critical	Task	Manual Task	Duration-only	Baseline Milestone	Summary	External Tasks	Inactive Milestone
Critical Split	Task Progress	Start-only	Baseline	Milestone	Manual Summary	External Milestone	Inactive Summary
Critical Progress	Task Progress	Finish-only	Baseline Split	Summary Progress	Project Summary	Inactive Task	Deadline



21 Jul 11, '21 Jul 18, '21 Jul 25, '21 Aug 1, '21 Aug 8, '21 Aug 15, '21 Aug 22, '21 Aug 29, '21 Sep 5, '21 Sep 12, '21 Sep 19, '21 Sep 26, '21 Oct 3, '21 Oct 10, '21 Oct 17, '21 Oct 24, '21 Oct 31, '21 Nov 7, '21 Nov 14, '21 Nov 21, '21 Nov 28, '21 Dec 5, '21



Critical	Task	Manual Task	Duration-only	Baseline Milestone	Summary	External Tasks	Inactive Milestone
Critical Split	Split	Start-only	Baseline	Milestone	Manual Summary	External Milestone	Inactive Summary
Critical Progress	Task Progress	Finish-only	Baseline Split	Summary Progress	Project Summary	Inactive Task	Deadline



Critical	Task	Manual Task	Duration-only	Baseline Milestone	Summary	External Tasks	Inactive Milestone
Critical Split	Split	Start-only	Baseline	Milestone	Manual Summary	External Milestone	Inactive Summary
Critical Progress	Task Progress	Finish-only	Baseline Split	Summary Progress	Project Summary	Inactive Task	Deadline